



## FACT SHEET: FIBER OPTIC BROADBAND IN NEW YORK CITY

### AGREEMENT: Verizon Upgrade Schedule

Cumulative Prems Passed (k) - % Complete								
Boro	Type	2008	2009	2010	2011	2012	2013	2014
Manhattan	SFU	98%	100%	100%	100%	100%	100%	100%
	MDU	57%	62%	66%	73%	82%	91%	100%
	Total	57%	62%	67%	73%	82%	91%	100%
Bronx	SFU	30%	46%	59%	69%	84%	96%	100%
	MDU	6%	23%	39%	58%	75%	92%	100%
	Total	13%	29%	45%	61%	77%	93%	100%
Queens	SFU	23%	39%	55%	69%	82%	95%	100%
	MDU	7%	21%	37%	54%	72%	93%	100%
	Total	15%	30%	46%	61%	77%	94%	100%
Staten Island	SFU	98%	100%	100%	100%	100%	100%	100%
	MDU	100%	100%	100%	100%	100%	100%	100%
	Total	98%	100%	100%	100%	100%	100%	100%
Brooklyn	SFU	17%	33%	47%	63%	77%	92%	100%
	MDU	8%	27%	42%	57%	76%	93%	100%
	Total	12%	30%	45%	60%	76%	93%	100%
NYC	SFU	32%	46%	59%	71%	83%	95%	100%
	MDU	27%	40%	51%	63%	78%	92%	100%
	Total	29%	42%	54%	66%	79%	93%	100%

Source: Appendix F of Cable Franchise Agreement by and between The City of New York and Verizon New York Inc. All dates in this schedule refer to December 31 of the year indicated, except for the year 2014, which refers to June 30. [SFU=Single Family Units | MDU = Multiple Dwelling Units]

### STATUS: Availability of Fiber Optic Broadband, as of December 31, 2012

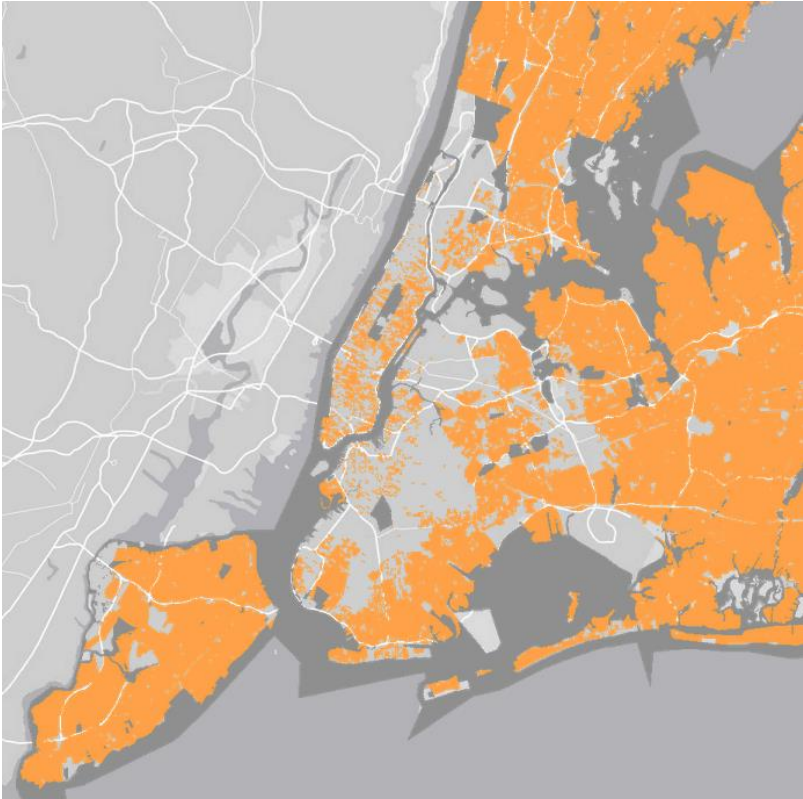
The following information and visual representations are based upon data from the New York State Office of Information Technology Services, which was collected under the Department of Commerce's National Telecommunications and Information Administration (NTIA) State Broadband Initiative. This information was last updated on April 17, 2013 and represents "as of" conditions for the period between July 1 and December 31, 2012. This information can be accessed online at <http://www.broadbandmap.ny.gov/>

Borough	Population *	Housing Units*	Housing Units w/ Access to Fiber Broadband	% of Total Housing Units w/ Access to Fiber Broadband
Manhattan	1,585,873	847,090	423,000	49.9%
Brooklyn	2,504,700	1,000,293	404,000	40.4%
Bronx	1,385,108	511,896	235,000	45.9%
Queens	2,230,722	835,127	488,000	58.4%
Staten Island	468,730	176,656	168,000	95.1%
<b>Total</b>	<b>8,175,133</b>	<b>3,371,062</b>	<b>1,718,000</b>	<b>51.0%</b>

\* Based on 2010 Census data

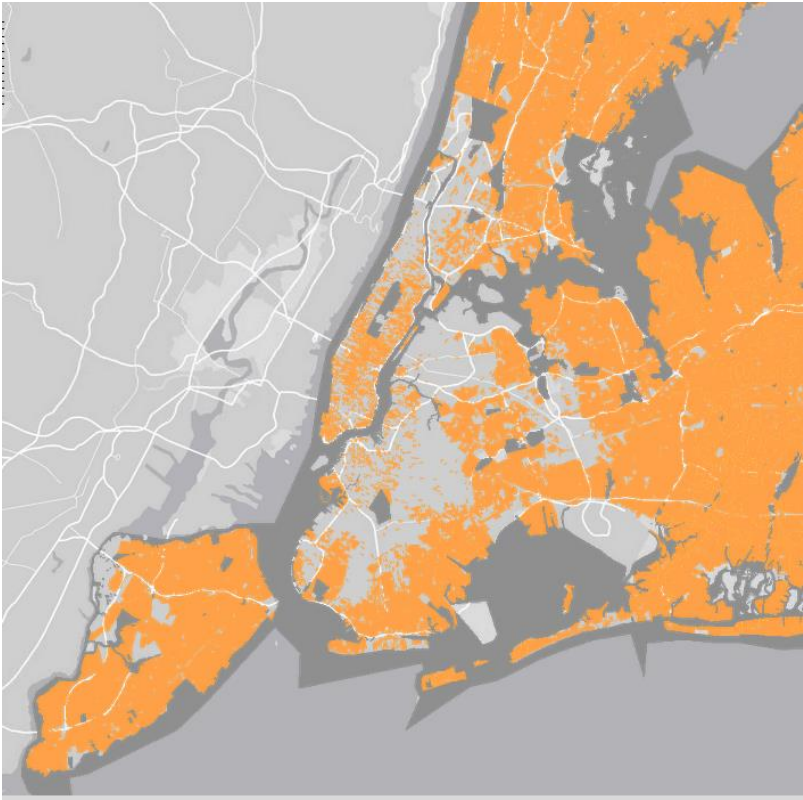
**Map of Residential Fiber Availability in New York City**

(Yellow=census tracts with fiber availability)



**Map of Combined Residential & Business Fiber Availability in New York City**

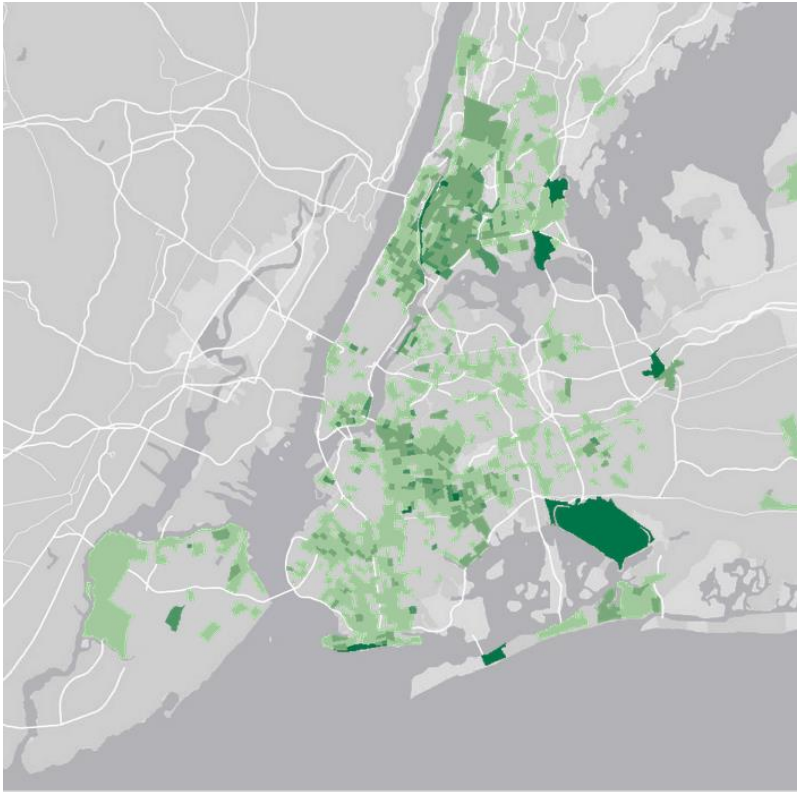
(Yellow=census tracts with fiber availability)



**ANALYSIS BY INCOME & EDUCATION LEVEL:**

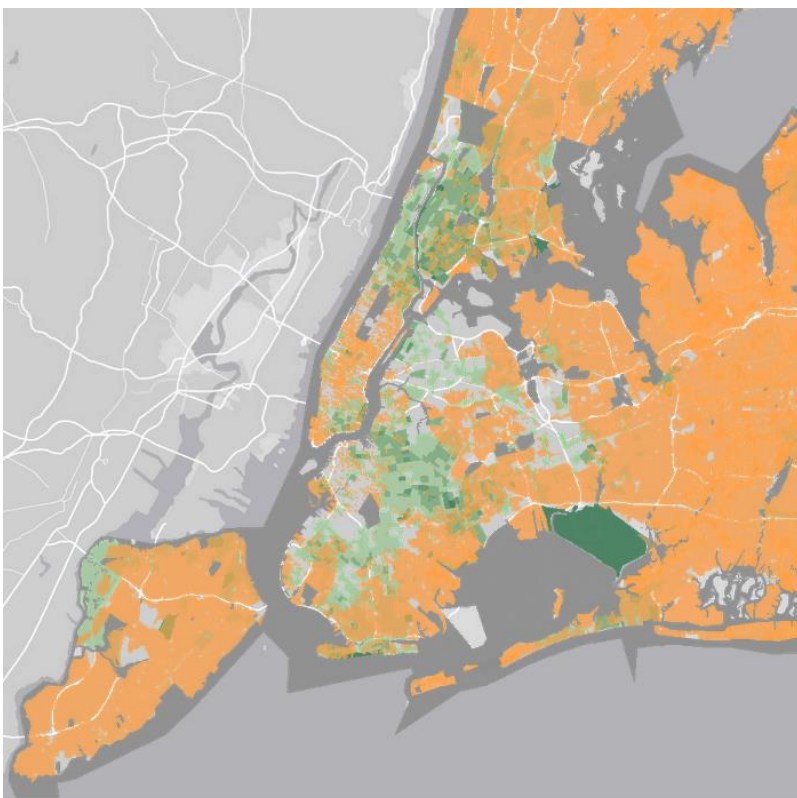
**Map showing Concentrations of Residents with Income Less Than \$20,000/Year**

(Green=census tracts with highest percent of residents with income less than \$20,000/year)



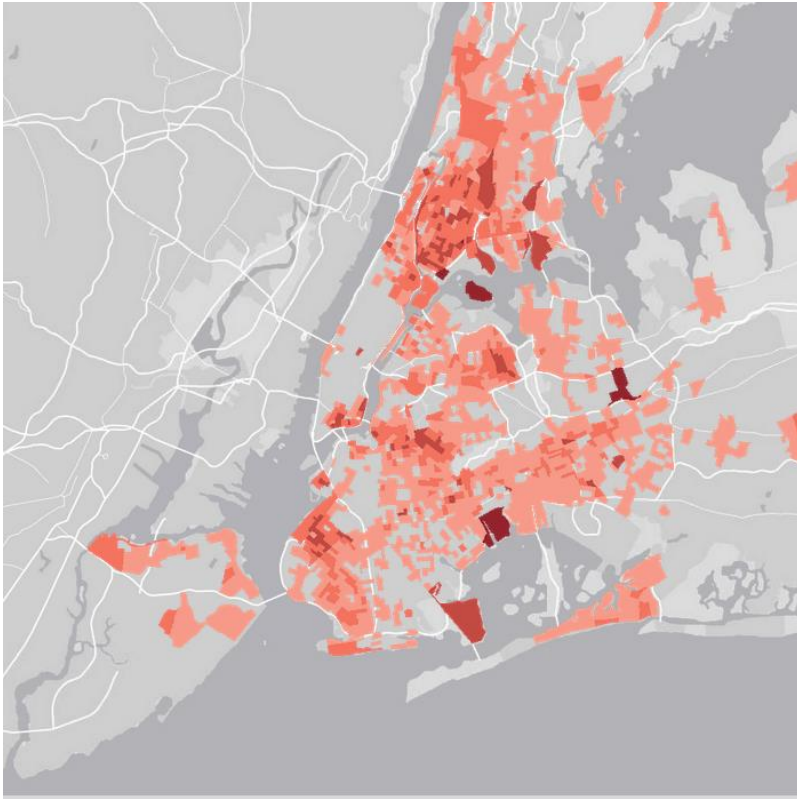
**Map showing Overlay of Fiber Availability (Residential + Business) with Concentrations of Residents with Income Less Than \$20,000/Year**

(Yellow=census tracts with fiber availability; Green=census tracts with highest percent of residents with income less than \$20,000/year)



**Map showing Concentrations of Residents with Less than High School Education**

(Red=census tracts with highest percent of residents with less than high school education)



**Map showing Overlay of Fiber Availability (Residential + Business) with Concentrations of Residents with Less than High School Education**

(Yellow=census tracts with fiber availability; Red=census tracts with highest percent of residents with less than high school education)

